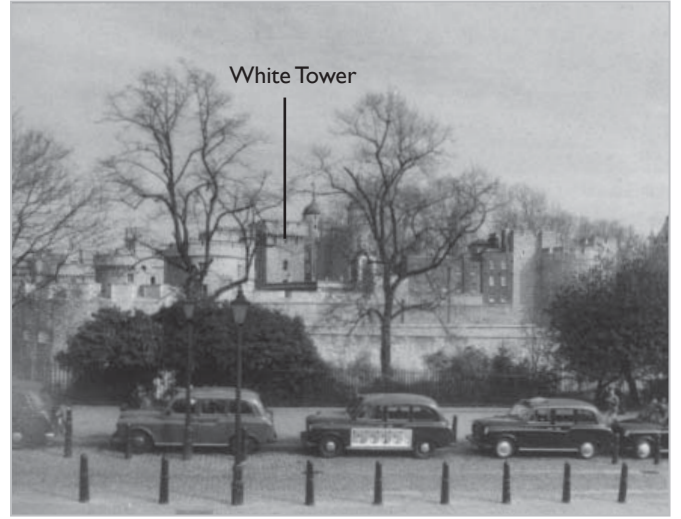




The Tower viewed from Tower Hill, c.1880.



The Tower viewed from Tower Hill, 1997 showing that the trees have matured.



A view of the south lawn in 1940 with the Main Guard in the background. The path arrangement is as recorded on the 1893 OS map (Figure 3.8)



The same view in 1997 showing the maturing London Plane trees and the removal of the path layout and associated planting.

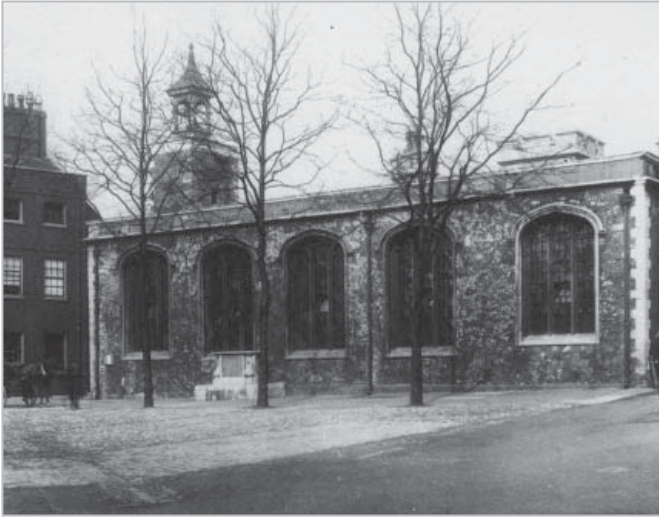


A solid line of trees east of the annex to the White Tower shortly before its demolition in 1879.



A photograph of c.1880 on Tower Green showing a number of London Plane trees.

Figure A3.14: Historic photographs



The Chapel c.1880 showing three London Plane trees in the middle ground.



The Chapel c.1970's showing that one of the trees has been removed and the others have been subject to crown lifting and reduction.



Trees to the rear of the Scaffold Site - c.1870.



A photograph dated c.1822 showing tree planting along the Wharf with the former Ordnance office rising above the river defences in the background.



The Wharf c.1890. Heavy guns were placed here during the 1860s, at a time when fortifications were being erected at strategic location throughout the British Isles to guard against a possible French invasion. The tree planting relates to the arrangement of the guns and the area of open lawn to the rear has been taken up by a cafe.



A view from Tower Bridge from 1898.